





if ONE can do it all...



ANSER X1

Redefining Your Standard for
Industrial Coding

ANSER NexGen Coding Technology

*ANSER X1 features our NexGen Coding Technology, designed to **drive all thermal inkjet cartridges**, giving you complete solution for all coding requirements*



CODING JUST GOT EASY

Robustness Beyond Ordinary Standard

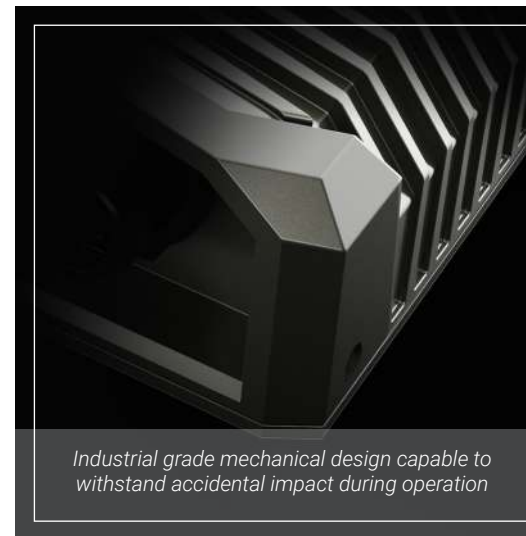
X1 is meant to redefine your expectation of industrial printer, by providing you complete robustness and reliability even under the most crucial working environment



Industrial grade cable withstanding up to 30kg of pull-force, preventing accidental cable disconnection



Scratch resistant and glove operational, yet smartphone-like sensitive touch screen



Industrial grade mechanical design capable to withstand accidental impact during operation



Cooling fin design to ensure reliable coding at high temperature environment

IP66 comes as standard

*Total dust ingress protection,
and capable to withstand
high pressure water jet during
production washdown*



Any Body Can Do

X1 user-interface design is not only user friendly, but intuitive. User training requirement and operation mistakes can be non-existence



CODING JUST GOT EASY

Simple yet Powerful

X1 features powerful customizable access control & status monitoring system, which provides you the ability to prevent human operation errors

PL1 !

Print Direction TEXT

Manufacturing Date: 2019/06/26 09:41

883 100

Production Counter Printing Speed Delay

66,789 76.2m/min 50mm

Stop

Real-Time Monitoring & Alert
Customizable display dashboard, with preventive notification feature to avoid production downtime

Status	Production Counter	Delay	Printing Speed	Printables
PL1	Stitch	66,789	50mm	76.2m/min Printhead-1 883 Printhead-2 560
Single	25,792	50mm	76.2m/min	Printhead-3 883
PL2	Single	2,000	53mm	50.9m/min Printhead-4 760
Single	25,792	80mm	70.8m/min	Printhead-5 900

Dual-Production Line Control
Control & monitor 2 production lines simultaneously with ease

Admin Manager Operator

Messages Devices Settings System Settings

All

Print/Stop/Select Messages

Message Settings

Edit Message

Create Message

Delete Message

Cancel Save

User Management System
Customizable user access level control, to reduce and eliminate operational mistakes

Production Line & Printhead System Connection Ink Ink Analysis

2019/07/05 - 2019/07/08

1500ml 1388ml 1500ml 1388ml

875ml 1653ml 1478ml 1500ml 1385ml 1500ml 1388ml

364ml 732ml 843ml 500ml 745ml

2019.07.05 2019.07.06 2019.07.07 2019.07.08 2019.07.09 2019.07.10 2019.07.11

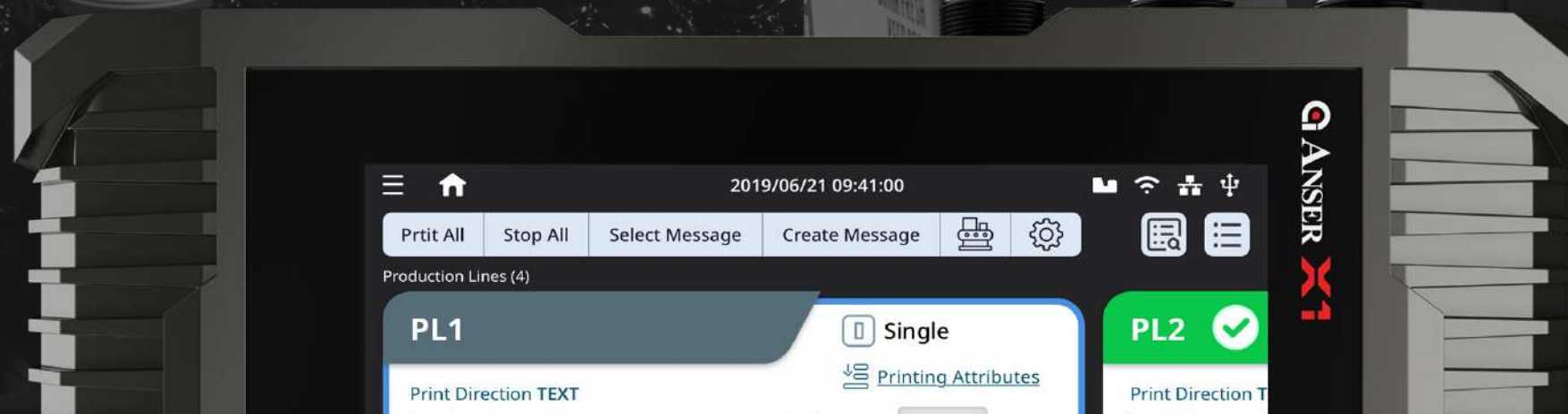
Export

Production & Ink Analysis Report
Informative production summary report for production verification and ink consumption analysis

1 Printer

2 Production Lines

X1 is capable of controlling 2 different production lines simultaneously, providing you operational efficiencies and cost saving advantages



if ONE can do it all...



High-Speed Coding
300m/min high resolution coding



Large-Image Coding
2-inch print height



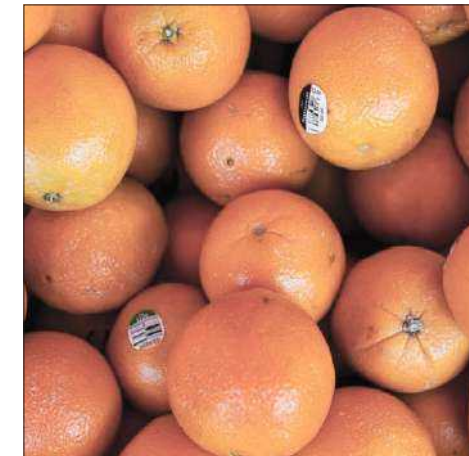
Non-Contact Coding
12mm printing distance

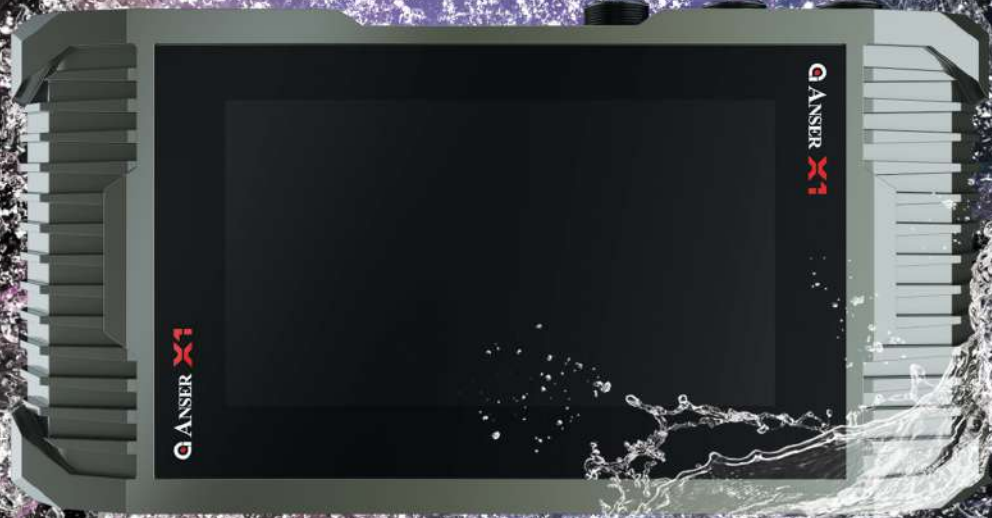


Non-Stop Coding
Cartridge replacement without downtime

Powerful Ink Portfolio for All Your Substrate Requirements

ANSER NexGen Coding Technology provides versatile ink selection driven by multiple TIJ cartridges, from general purpose to specialty inks to meet your industry requirements





Whatever they can do,
I can do better...



QANSER

www.anser-u2.com